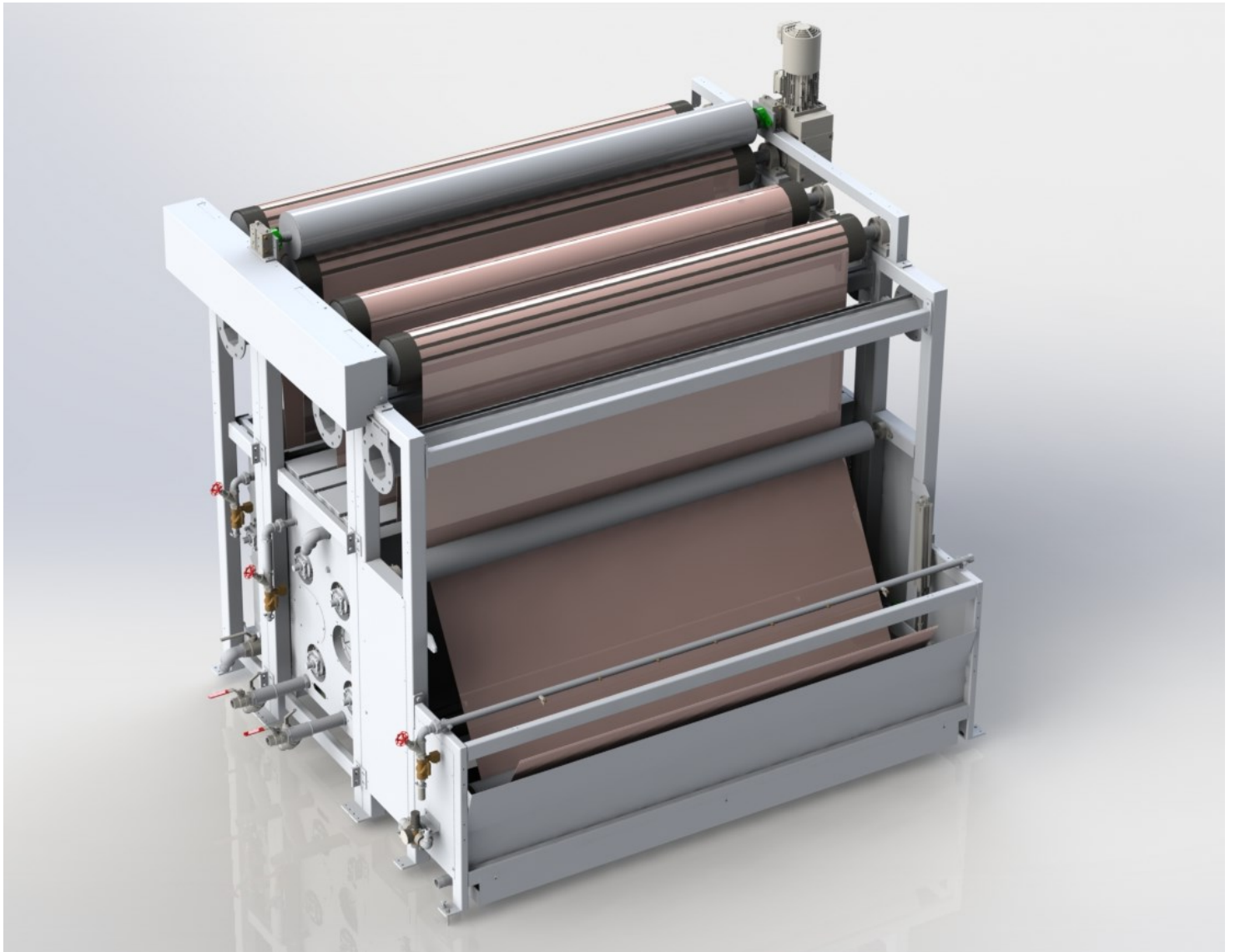




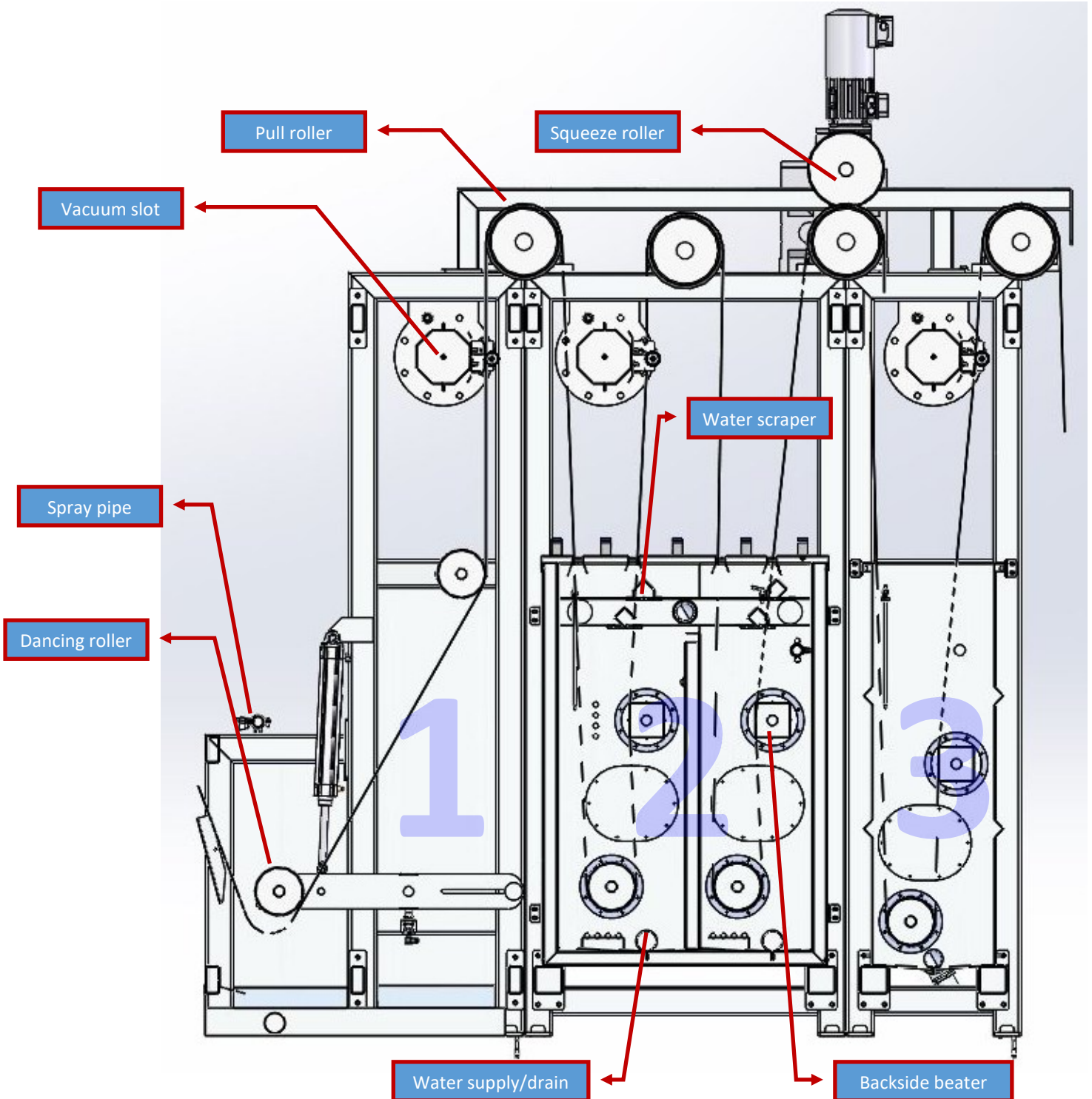
# SUPRAWASH.MODULAR WASHING CONCEPT



This modular washing machine is developed especially for integration in **CHROMOJET** or **COLARIS** digital printing systems.

FOR  
**POLYAMIDE**  
**POLYESTER**  
**COTTON.PRINTS**

# BASIC.LAYOUT AND FUNCTIONS



# BASIC.LAYOUT AND FUNCTIONS

## VACUUM.SLOTS AND VACUUM POWER

For pile products we use a round type slot with a slot width of about 4 mm.  
Per meter slot we calculate about 10 kW vacuum power.

For flat textile products we use a relatively sharp edged slot with about 2 mm.  
Per meter slot we calculate about 5 kW vacuum power.

### Available widths:

- 2.3 m for carpet
- 2.7 m for blankets and terry products
- 3.3 m for blankets

## WATER.SEPARATORS

To avoid water from entering the pump a separator system is used. A diaphragm pump (triggered by a level switch) is used to remove and discharge the water.

Pump Selection	Water Ring Pump	Roots Blower	Blower
Pressure level	Up to -0.5 bar	Up to -0.4 bar	Up to -0.3 bar
Characteristics	Relatively low air volume at good negative pressure	Good suction power at mid level air volume	High air volume at medium negative pressure
Advantage / disadvantage	Needs water for sealing; water can be used for washing	Extremely loud; needs sound insulation	Works very well on carpets and textiles where air can pass through.
Application	For carpets with coatings	Multi purpose	This is the preferred type for high pile products

## SUPRAWASH.ADVANTAGES AND CHARACTERISTICS

- Modular system
- Stable construction
- Side and top insulation to maintain water temperature if heated
- Outside roller bearings for easy service
- Access openings for service and fabric feed-in
- Suction bars and squeeze rollers can be combined
- Minimum distance between vacuum bars and pull rollers to avoid carpet and fabric tension
- Integrated dancing roller for synchronization
- Integrated pile or back beating with variable speed
- Water heating is not part of the washing system



# WASHING OF DIFFERENT PILE MATERIALS AND CHEMISTRY

	Module 1	Module 2	Module 3
<b>Basic function</b>	<p>Cold water is sprayed onto the textile to cool down the print. This avoids cross-staining of unfixed dye.</p> <p>The vacuum extraction removes most of the thickener, unfixed dye and other chemicals.</p> <p>The pull roller is installed outside directly behind the vacuum slot.</p>	<p>This is the main washing unit consisting of 2 loops and 2 under water beating units which create a very intense movement and excellent washing effect.</p> <p>The vacuum units remove all unfixed dyes.</p> <p>This bath can be operated with warm or hot water and chemicals can be added by automatic dosing pumps.</p> <p>The pull roller is installed outside directly behind the vacuum slot.</p>	<p>This is the clearing and rinsing module.</p> <p>A underwater beater creates again an intense washing and rinsing effect.</p> <p>The vacuum unit with a wider slot removes the water so the fabric can be dried easily.</p> <p>The pull roller is installed outside directly behind the vacuum slot.</p>
<b>Polyamide pre-washing</b>			Pre washing with warm water followed by vacuum extraction
<b>Polyester pre-washing</b>		Hot pre-washing followed by vacuum extraction	
<b>Polyamide washing</b>	Cold rinsing to cool down the carpet followed by vacuum extraction to remove most of the thickener and eventual unfixed dye		Cold washing followed by vacuum extraction
<b>Polyester washing</b>	Cold rinsing to cool down the carpet followed by vacuum extraction to remove most of the thickener and eventual unfixed dye	Reductive washing with hot water of about 70°C followed by vacuum extraction	Cold washing and neutralization followed by vacuum extraction
<b>Reactive washing</b>	Cold rinsing to cool down the carpet followed by vacuum extraction to remove most of the thickener and eventual unfixed dye	One or two hot water washing sequences followed by vacuum	Cold washing and neutralization followed by vacuum extraction



INNOVATION

QUALITY

SERVICE

**Zimmer Maschinenbau GmbH**  
 DIGITAL PRINTING SYSTEMS  
 Eibergstrasse 2-8  
 6330 Kufstein | AUSTRIA  
 Phone +43 (5372) 648 93 - 0  
 info@zimmer-austria.com



J. ZIMMER Maschinenbau GmbH, Kufstein reserves the right of technical and design modification of the equipment described within this brochure at any time without prior notice. This leaflet is for informative purpose only.