



ZIMMER AUSTRIA | Kufstein
DIGITAL PRINTING SYSTEMS

MACHINERY & SERVICES

TEXTILE PRINTING | FLOOR COVERINGS |
NARROW FABRICS | DIGITAL FUNCTIONALIZATION |
SPECIALITIES



1. ZIMMER AUSTRIA

1.1. ABOUT ZIMMER - HISTORY, LOCATION, DELIVERY PROGRAM	3
1.2. ZIMMER MANUFACTURING - FROM ENGINEERING TO SERVICE	4
1.3. DIGITAL PRINTING - TECHNOLOGY CENTER	5

2. BASICS OF DIGITAL TEXTILE AND CARPET PRINTING

2.1. DYE / FIBER AND IT'S FIXATION PROCESS	6
2.2. STEPS TO SELECT THE RIGHT PROCESS, INK AND INKJET PRINTER	7
2.3. DIGITAL PRINTING - WORK FLOW / DESIGN / RIP / PRINT	8
2.4. STARFIRE™ PRINT HEAD: SELECTION, RECONDITIONING SERVICE, INK LAB	9

3. COLARIS - CHARACTERISTICS AND FEATURES

3.1. COLARIS DIGITAL PRINTING - HOW IT WORKS	10
3.2. COLARIS MODELS	11

4. COLARIS APPLICATIONS

4.1. COLARIS HOME TEXTILES	12
4.2. COLARIS FASHION PRINTING	13
4.3. COLARIS CARPET PRINTING - POLYAMIDE	14
4.4. COLARIS CARPET PRINTING - POLYESTER	15
4.5. COLARIS - PIGMENT PRINT	16
4.6. COLARIS FOR SPECIAL APPLICATIONS	17

5. COLARIS - NARROW FABRICS

5.1. COLARIS-NF PRINTING	18
5.2. COLARIS-NF APPLICATION	19

6. CHROMOJET

6.1. CHROMOJET - HOW IT WORKS	20
6.2. CHROMOJET - INSTALLATIONS AND APPLICATIONS	21

7. CARPET COATING

7.1. CARPET BACK COATING	22
7.2. PVC COATING OF CARPET TILES AND MATS	23

8. LINE COMPONENTS

8.1. TEXTILE AND CARPET - STEAMING, WASHING, DRYING, ENTRY, EXIT-UNIT	24
8.2. OPTIONAL MACHINERY	25

9. LAB EQUIPMENT

9.1. CARPET LAB EQUIPMENT	26
9.2. SPECIAL MACHINERY - COLARIS INK PERFORMANCE TESTER, CHROMOJET TABLETOP	27

1. ZIMMER AUSTRIA

1.1. ABOUT ZIMMER - HISTORY, LOCATION, DELIVERY PROGRAM

Quality since 1874

Factory Franz Zimmer's Erben KG | Warnsdorf



With production sites in Kufstein and Klagenfurt we offer a product portfolio that includes screen printing, digital printing, digital functionalization, coating, drying and steaming systems as well as a broad range of sample, lab and washing machines.

ZIMMER AUSTRIA has formed the textile and carpet manufacturing market with pioneering innovations and revolutionary technologies.

ZIMMER AUSTRIA with its know-how and global business partners is the ideal and most competent partner for the total printing process - all elements out of one hand.

Driven by perfection and committed to the credo – First in Quality & First in Service – the machine manufacturer **ZIMMER AUSTRIA** has become the benchmark for dependable high-class printing and coating machines for the textile- and carpet industry. **ZIMMER AUSTRIA** reaches even the most distant markets and supplies all around the globe owing to a strong and well-developed agent network and cooperation with sales and service companies **ZIMMER AUSTRIA Inc.** and **ZIMMER CHINA**.



ZIMMER AUSTRIA | Kufstein

- ◆ **COLARIS** digital inkjet printer for carpet and textile applications
- ◆ **CHROMOJET** valve jet printer for high pile products
- ◆ Carpet steaming, washing and drying equipment
- ◆ Carpet coating lines
- ◆ PVC coating systems for carpet tiles and mats
- ◆ Digital inkjet printer for special applications



ZIMMER AUSTRIA | Klagenfurt

- ◆ **ROTARY SCREEN** Printing Machines
- ◆ **FLAT SCREEN** Printing Machines
- ◆ **COATING** Systems
- ◆ **THERMOCURE DRYER** and **MODUS STEAMER**
- ◆ **HEAT TREATMENT** Machines
- ◆ **CONTRACT MANUFACTURING**

1. ZIMMER AUSTRIA

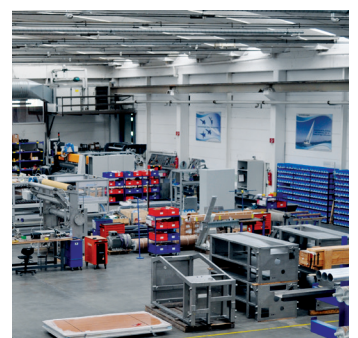
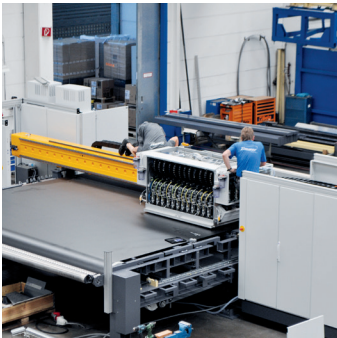
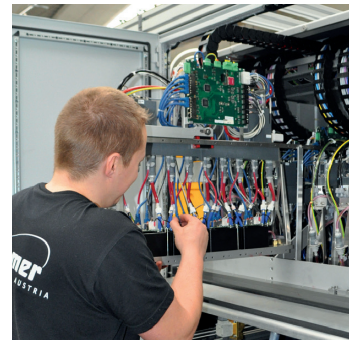
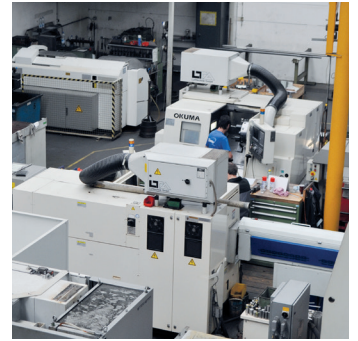
1.2. ZIMMER MANUFACTURING - FROM ENGINEERING TO SERVICE



ZIMMER AUSTRIA is well known for their flexibility and for building tailor made machines and systems. This is also the reason why we remain one of very few textile machine manufacturers with a deep vertical manufacturing process.

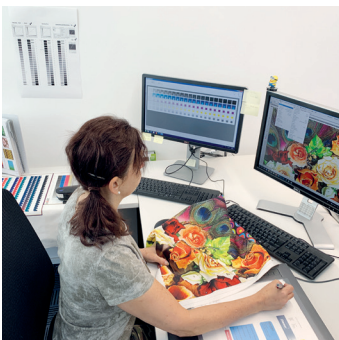
Starting from engineering to mechanical manufacturing, electronic and software development, control cabinet assembly, programming, internal testing, shipping, installation and start-up - and most important: **AFTER-SALE SERVICE** from **ZIMMER AUSTRIA**.

In addition we offer on-site process development and optimization for a wide range of digital printing and coating applications.



1. ZIMMER AUSTRIA

1.3. DIGITAL PRINTING - TECHNOLOGY CENTER



Our TECHNOLOGY CENTER is the heart and source of all our developments and innovations. New technologies and processes are developed and tested on individual textiles, carpets, narrow fabrics and other materials.



We are equipped with all our technologies including **CHROMOJET, COLARIS**, coating systems and a comprehensive range of testing and laboratory equipment. But most important is the staff working there - all of them are specialists in their field.



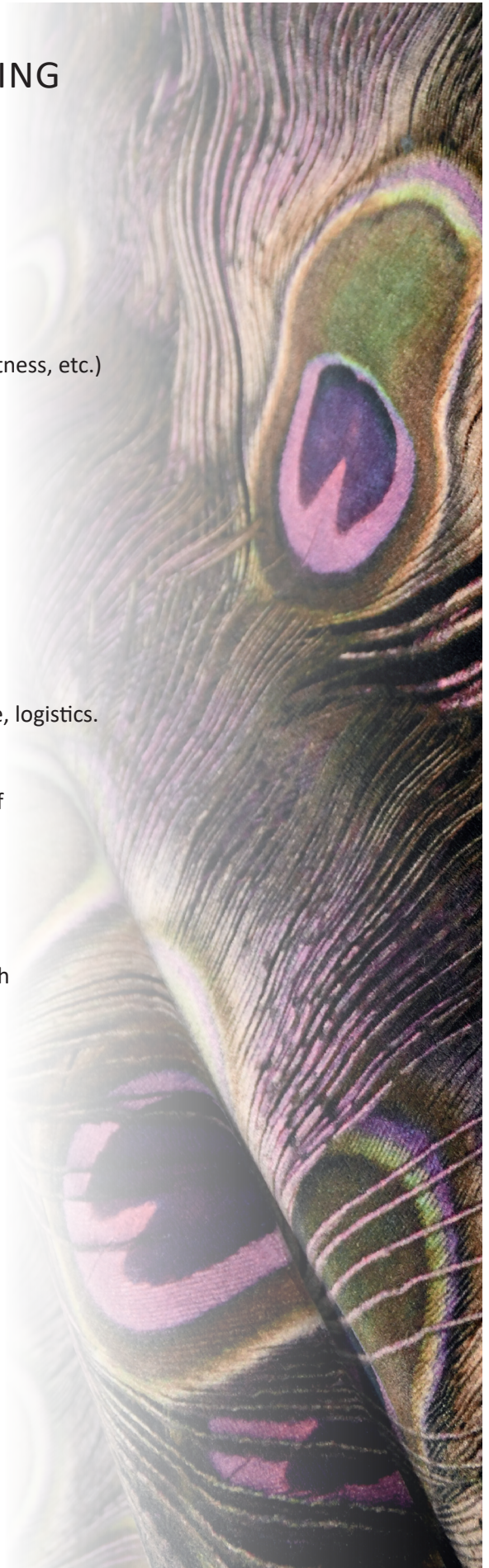
2. BASICS OF DIGITAL TEXTILE AND CARPET PRINTING

2.1. DYE / FIBER AND IT'S FIXATION PROCESS

INK TYPE, FIBERS, FASTNESS	PROCESS	APPLICATION	
ACID polyamide (nylon), wool, silk light fastness ++ wash fastness ++ crock fastness ++ chlorine fastness + brilliancy ++	Textile: <ul style="list-style-type: none"> • pre-coating > dry • print > dry • steam > wash > dry Carpet: <ul style="list-style-type: none"> • pre-wash > print > steam > wash > dry 	swimwear and sports, elastic tapes mats, rugs, carpet tiles, wall-to-wall carpet	
REACTIVE cotton/ cellulosic fibers wool/proteine fibers light fastness + wash fastness +++ crock fastness ++ chlorine fastness + brilliancy ++	Textile: <ul style="list-style-type: none"> • pre-coat > dry • print > dry • steam > wash > dry Carpet: <ul style="list-style-type: none"> • pre-wash > print > steam > wash > dry 	fashion, bedding; upholstery, terry products cotton mats; polyamide carpets	
Low, medium and high energy DISPERSE dye polyester light fastness ++ wash fastness ++ crock fastness ++ chlorine fastness + brilliancy +++	Textile: <ul style="list-style-type: none"> • pre-coat > dry • print > dry • steam > wash > dry Carpet: <ul style="list-style-type: none"> • print > dry at 180°C • wash > dry 	fashion, outdoor fabric, window fashion, upholstery, automotive nonwoven carpet, mats, rugs	
PIGMENT all types of fibers light fastness +++ wash fastness + crock fastness + chlorine fastness ++ brilliancy +++	Textile: <ul style="list-style-type: none"> • pre-coat > dry • print > dry • (opt. post-coat > dry) 	outdoor textiles, bedding, upholstery, curtains, camouflage, nonwoven	
VAT cotton, linen, viscose light fastness +++ wash fastness +++ crock fastness ++ chlorine fastness ++ brilliancy ++	Textile: <ul style="list-style-type: none"> • pre-coat > dry • print > dry • impregnation with alkali > steam > reduction cleaning > wash > dry 	outdoor textiles, terry towels, bedding, upholstery, curtains, camouflage, work-wear, institutional textiles	
CATIONIC acrylic, cationic dyeable polyester light fastness +++ wash fastness ++ crock fastness ++ chlorine fastness + brilliancy ++	Textile: <ul style="list-style-type: none"> • pre-coat > dry • print > dry • steam > wash > dry Carpet: <ul style="list-style-type: none"> • pre-wash > print > steam > wash > dry 	acrylic fashion mats, rugs, wall-to-wall carpet	

SOME GUIDELINES AND QUESTIONS YOU SHOULD CONSIDER BEFORE DECIDING FOR A DIGITAL PRINTING SYSTEM:

1. Which market do I want to serve?
Each market has its own rules, demands and technologies.
2. Which fiber is needed for my market (cotton, silk, wool, polyester, polyamide,)?
3. Which fastness levels (light-, wash-, rub-, weather-, chlorine- fastness, etc.) are important for my market?
4. Specify the required print width and production speed based on your realistic sales forecast.
5. Based on fiber and fastness requirements, the dyeing (ink) class and process can be specified.
6. The dye class leads to the preferable print-head system (circulation or non circulation type).
7. Choose the right ink partner based on support, experience, price, logistics. Advantage of an open ink system!
8. Definition of the required number of process colors as a result of color gamut, investment cost, ...
9. Are control system and software suitable for my application?
Which particularities do my market and work-flow require?
10. Are quality of my raw-material and process-stability good enough for industrial production?
11. How do I define, measure and communicate colors?
Do I have a color measurement system (spectrophotometer)?
12. Which design system do I need (vector or pixel based system)?
13. Which RIP software is best for me? (the RIP provides the digital information to build up a specific color using the process colors used by the printer)
14. Do I have space to install a high-tech printing system with its demand on constant temperature and humidity?
15. Do I have all utilities like fresh-, soft- and RO water, conditioned room for the printer, waste water treatment, steam, gas, compressed air, electricity, ...?
16. Do I have the right people to operate software and print line?



2. BASICS OF DIGITAL TEXTILE AND CARPET PRINTING

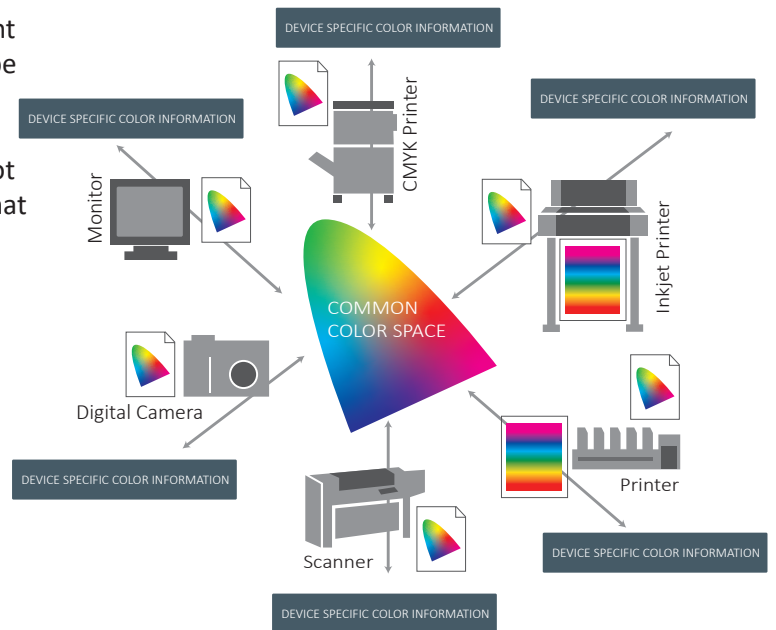
2.3. DIGITAL PRINTING - WORK FLOW / DESIGN / RIP / PRINT

Digital printing is a complex task for which the entire work-flow has to match. From design, color management and communication up to printer calibration - all must be perfect for a superb result.

Essential tools are fast computers and networks and a lot of memory space - and trained specialists who know what they are doing.

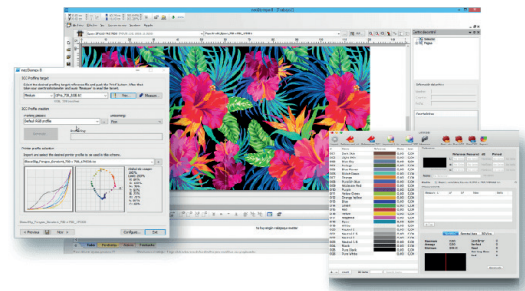
PRINTER CALIBRATION:

The basic setup of the process and the print resolution must be set and stable before a calibration is made. Calibration is a software supported process made in several steps (linearization, printing and measuring targets, generating of printer and ICC profiles).



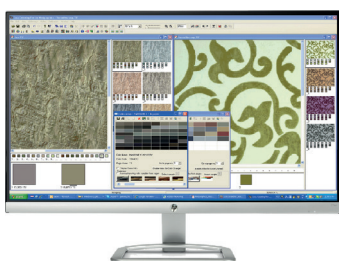
COLOR MEASUREMENT AND COMMUNICATION:

Digital printing needs digital information to communicate. Color measurement is essential. Different measuring devices can be used - depending on substrate and surface. Color is normally communicated within the L*A*B-color-system.



COLOR CALIBRATION:

To communicate and match colors - color calibration is needed. This makes sure that colors appear identical on different devices and printers. A re-calibration is normally needed if a major parameter (base material, ink, fixation process, ...) is changed in the total process.



DESIGN SOFTWARE:

There are a number of pixel- or vector- based software tools on the market: Photoshop®, Gimp®, Nedgraphics®, Illustrator®, Corel Draw® ...

RIP PROCESS:

During the RIP process the color information from the art-work file is transformed and split into channels. For each process color (ink) one channel is used.

PRINTING PROCESS:

Printing is the final process step taking all parameters from previous settings in account.

2. BASICS OF DIGITAL TEXTILE AND CARPET PRINTING

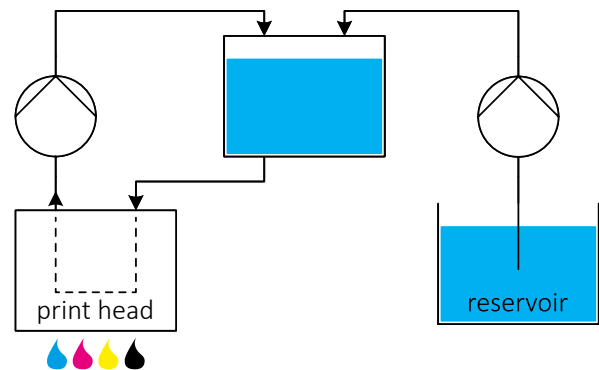
2.4. STARFIRE™ PRINT HEAD: SELECTION, RECONDITIONING SERVICE, INK LAB



TECHNICAL FEATURES

- ◆ Robust and reliable construction
- ◆ Repair Center for reconditioning print heads
- ◆ Coated metal nozzle plate - to withstand abrasion and resist damage
- ◆ High firing frequency - for high productivity
- ◆ High drop velocity - distance between print head and fabric can be up to 6 mm
- ◆ VersaDrop™- incorporated binary and greyscale jetting modes
- ◆ RediJet™- continuous ink recirculation system to avoid nozzle blockage and to reduce ink waste
- ◆ 4 interchangeable print heads with different drop sizes for a wide range of applications

INK SUPPLY & CIRCULATION SYSTEM



StarFire™ Print head models	1024/XSA	1024/SA	1024/MA	1024/LA
Drop sizes	7 - 21 pl	12 - 35 pl	30 - 75 pl	80 - 240 pl
Applications	light fabrics i.e. wash labels, lanyards, deco tapes, fashion	medium fabrics i.e. fashion, camouflage, home textiles	heavy fabrics i.e. technical webbings, terry towels, velours	pile production i.e. carpet, mats, blankets, felts

3. COLARIS - CHARACTERISTICS AND FEATURES

3.2. COLARIS MODELS

COLARIS MODELS										
2019-11-28										
COLARIS	COLARIS	COLARIS	COLARIS	COLARIS	COLARIS	COLARIS	COLARIS	COLARIS	COLARIS	
12-1200T	12.2200	24.2200	48-2200	48-2600	48-3400	96-2200	96-2600	96-3400	48-4200	
Max. config. (color groups x heads)	12 x 1	12 x 1	12 x 2	6 x 8	6 x 8	12 x 8	12 x 8	12 x 8	6 x 8	12 x 8
Max. print width [mm]	1200 x 1200	2200	2200	2600	3400	2600	2600	3400	4200	5200
Max. number of colors	12	12 or 6	12 or 6	6	6	12 or 6	12 or 6	12 or 6	6	12 or 6
Print heads per color	1	1 or 2	2 or 4	8	8	8 or 16	8 or 16	8 or 16	8	8 or 16
Booster ink supply system	opt.	opt.	opt.	opt.	opt.	opt.	opt.	opt.	opt.	opt.
Thermoplast glueing device				opt.	opt.	opt.	opt.	opt.	opt.	opt.
PVA wet glueing device				opt.	opt.	opt.	opt.	opt.	opt.	opt.
Integrated unrolling		opt.	opt.	opt.	opt.	opt.	opt.	opt.	opt.	opt.
Moving press roller				opt.	opt.	opt.	opt.	opt.	opt.	opt.
Belt washing device		opt.	opt.	opt.	opt.	opt.	opt.	opt.	opt.	opt.
Tile positioning device		opt.	opt.	opt.	opt.	opt.	opt.	opt.	opt.	opt.
CHROMOJET inline application		opt.	opt.	opt. 256/512	opt. 256/512					
Refillable ink tanks	2 l	5 l	5 l	10 l			10 l	10 l	10 l	10 l with refill-pump
Print heads	FUJIFILM Dimatrix StarFire™ XS with 7 pl; SA with 12 pl; MA with 30 pl; LA with 80 pl									
Ink circulation system	Permanent ink circulation with 3-stage filtration to avoid blockage and sedimentation - especially needed for pigment-, disperse-, and vat inks									
Print head temperature control	To keep the temperature of the print head constant to avoid thermal expansion effecting print precision									
Ink temperature control	Operated at 24°C +/- 2°C									
Ink system	The ink and the carriage are kept at a constant temperature to guarantee constant viscosity									
Print head cleaning	Manual	Automatic cleaning, wiping, spraying and vacuum system								
Head access	Access single heads from front									
Pattern handling	Unlimited number of patterns with any length can be loaded (just limited by memory)									
File format to print	TIFF layers generated by most commercial RIP's									
Print server	High performance PC with Windows 10, 10 GB Ethernet; 1TB SSD; 64 GB RAM									
Conveyor belt	Endless Kevlar-belt for highest precision with needles for carpet or thermoplast/permanent glueing system									
Roller diameter [mm]	n.a.	300	300	400	400	300	400	400	500	500
Head drive	Belt drive		Linear motor drive							
Data transfer	Glass fiber cables between print server and print head driver									
Online service	Remote access									
Ink systems	Pigment, VAT, Disperse, Acid, Reactive, Direct Sublimation, Cationic									

4. COLARIS APPLICATIONS

4.1. COLARIS HOME TEXTILES

Digital inkjet printing on home textiles becomes more and more popular. Each application on home textiles has its own rules and demands - especially when it comes to different fastness requirements.



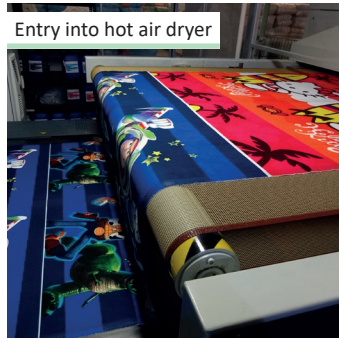
APOLO TEXTILE, Mexico

COLARIS PRODUCTION PRINTER FOR HOME TEXTILES:

print width:	2200 2600 3400 mm
resolution:	400 x 400 up to 800 x 3200 dpi
number of colors:	4 up to 12
number of print-heads:	1, 2, 4, 8, 16 per color
production speed:	90 - 1000 sqm/hour



COLARIS terry-towel print line at Loftex, China



Entry into hot air dryer



TERRY TOWELS

good wash and rub fastness and perfect penetration are needed. Either printed with reactive dyes for promotion towels or VAT dyes for hospitality towels.



WINDOW FASHION

is normally printed with pigment inks for highest light fastness.



UPHOLSTERY

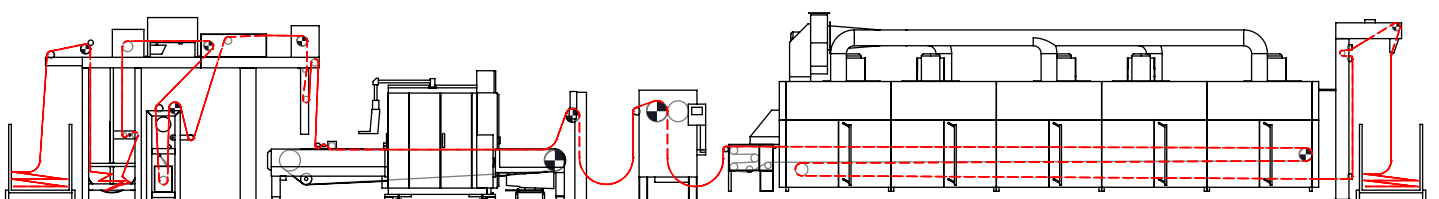
needs excellent rub and light fastness - perfect to be printed with VAT or pigment inks.



POLYESTER BLANKETS

and fleece products - good wash fastness and brilliant colors are essential. PES raschel and fleece products are normally printed using disperse inks.

BLANKET PRINTING LINE



4. COLARIS APPLICATIONS

4.2. COLARIS FASHION PRINTING

COLARIS PRODUCTION PRINTER FOR FASHION PRINTING:

print width:	2200 2600 3400 mm
resolution:	400 x 400 up to 800 x 3200 dpi
number of colors:	4 up to 12
number of print-heads:	1, 2, 4, 8, 16 per color
production speed:	90 - 1000 sqm/hour

Fashion printing is most popular using inkjet technology. Most of fashion are printed using reactive inks because of the wide color gamut and its good light and wash fastness.

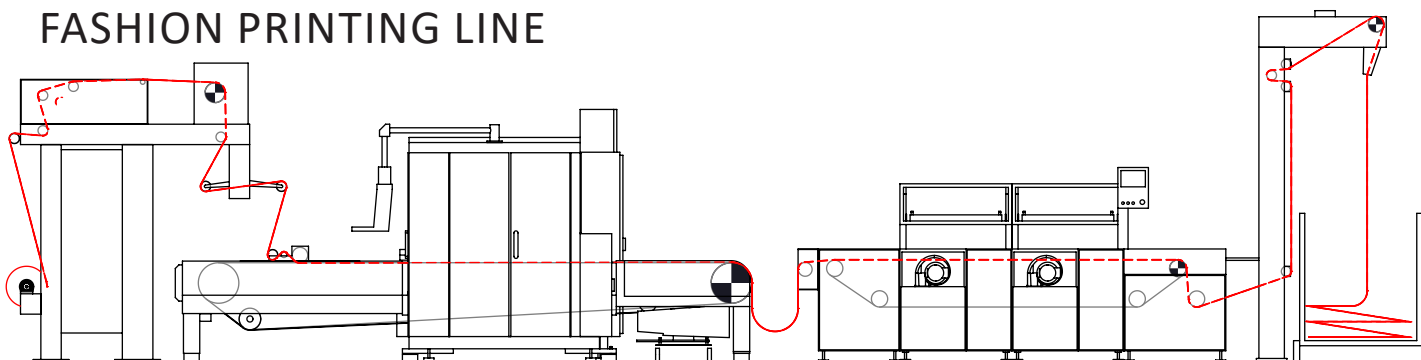
In the future we will see more and more pigment prints on fashion products, for good reasons:

- ◆ Pigment is a simple print process
- ◆ Easy fixation using infrared radiators or hot air
- ◆ Brilliant colors
- ◆ Good haptics
- ◆ Relatively low investment
- ◆ No waste-water



For special market segments like accessories or African prints, where perfect penetration and deep colors or special inks are required, **COLARIS** printer is the perfect solution.

FASHION PRINTING LINE



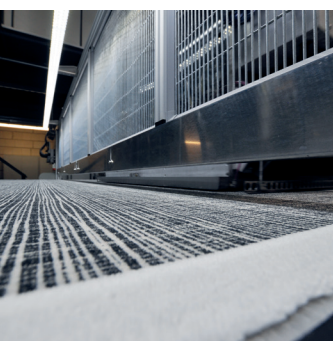
4. COLARIS APPLICATIONS

4.3. COLARIS CARPET PRINTING - POLYAMIDE

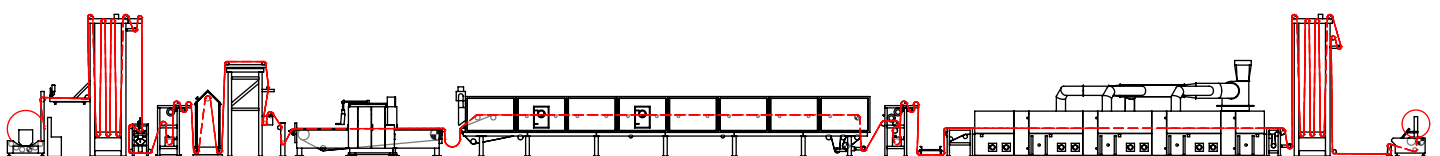
Based on **ZIMMER's** long history in screen and **CHROMOJET** carpet printing we developed the **COLARIS** carpet printing system. Unique process technology and special software features enable us to print carpet pile products with deep penetration, sharpest definition and rich colors. A number of special solutions are available for each product and market.

PRODUCTS:

- ◆ Carpet tiles out of polyamide
- ◆ Mats out of polyamide, polyester or modified (cationic) polyester
- ◆ Rugs out of polyester or polyamide
- ◆ Wall-to-wall carpet out of polyamide, wool, polyester
- ◆ Needlefelt out of polyester



PRINT ON POLYAMIDE, WOOL AND MODIFIED POLYESTER USING SATURATED STEAM TO FIX ACID AND REACTIVE INK (DYE)



4. COLARIS APPLICATIONS

4.4. COLARIS CARPET PRINTING - POLYESTER

CARPET CONSTRUCTIONS:

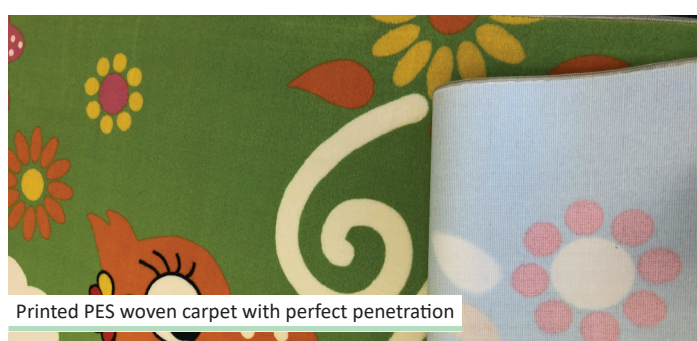
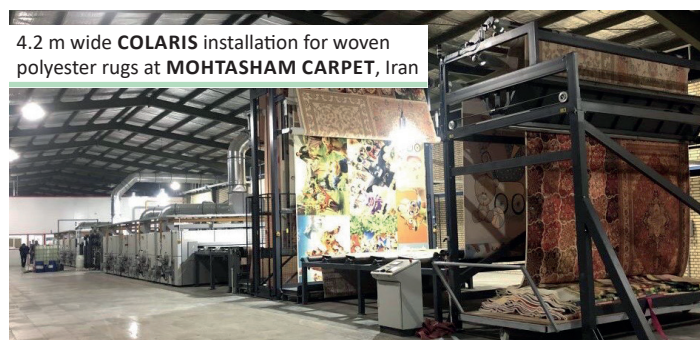
Tufted, Woven, Flocked, Needlefelt, Knitted Raschel

INK SYSTEM:

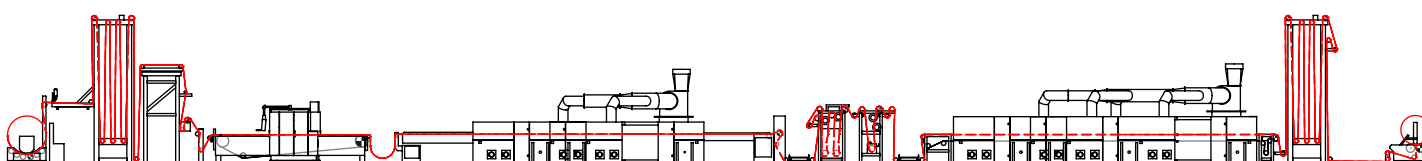
- ◆ Acid for polyamide and wool
- ◆ Disperse for polyester and modified polyester
- ◆ Cationic for modified polyester
- ◆ Reactive for polyamide, wool, cotton, ...

COLARIS CARPET PRODUCTION PRINTER:

print width:	2200 2600 3400 4200 5200 mm
resolution:	400 x 400 up to 800 x 3200 dpi
number of colors:	4 up to 12
number of print-heads:	1, 2, 4, 8, 16 per color
production speed:	60 - 1000 sqm/hour



PRINT ON POLYESTER AND MODIFIED POLYESTER USING DRY HEAT TO FIX THE DISPERSE INK (DYE)



4. COLARIS APPLICATIONS

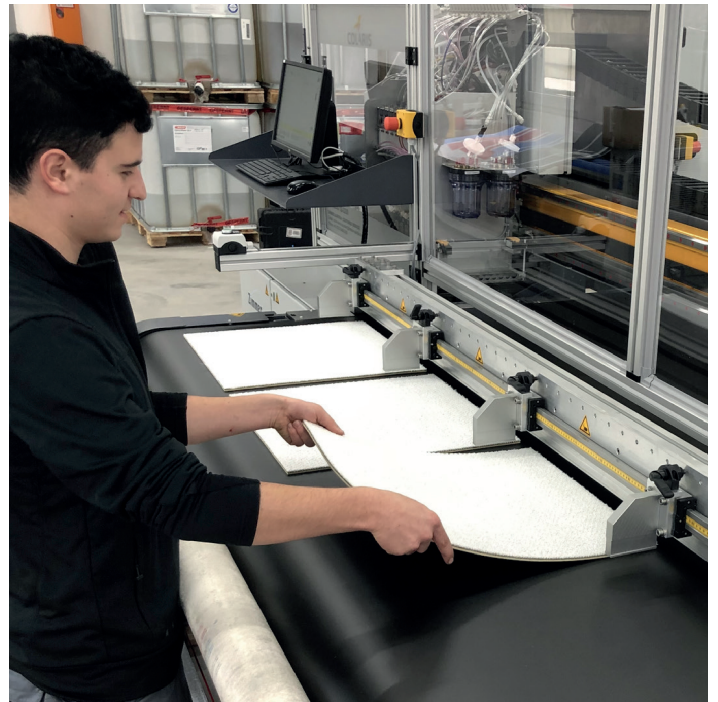
4.5. COLARIS - PIGMENT PRINT

Printing on technical textiles, rigid panels, cardboards, nonwovens, felts, wood, ... using waterbased pigment inks is becoming more and more popular.

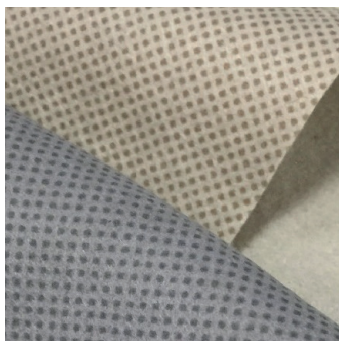
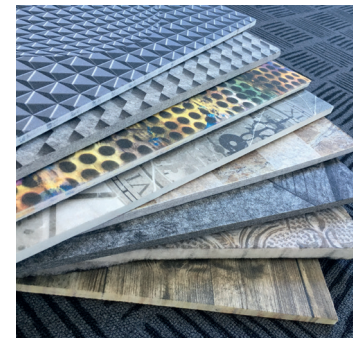
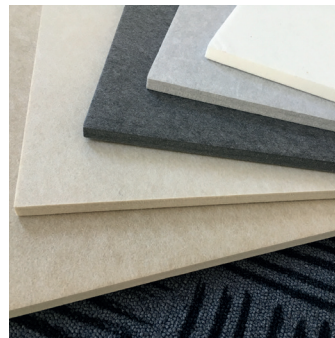
Nowadays individualization as well as short delivery time are key factors and digital inkjet printing technology is the only way to add value for most applications.

Pigments enable a simple fixation process, brilliant colors, excellent light fastness and a pretty good crock fastness.

Pigment inks require the following technology: ink circulation system, temperature control, individual waveforms, etc.



Rigid polyester nonwoven panels for acoustic or architectural usage. Complete new applications will pop up in future. **COLARIS** is made for printing on rigid tiles and mats!



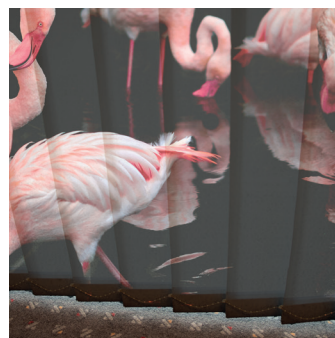
Pigment printing for automotive applications: headliners, insulation layers etc.



COLARIS pigment printing on sponges, wipes and other consumables.



Individual printed gypsum ceiling tiles for offices, meeting rooms, auditorium halls etc.



Printed vertical window-blinds.

4. COLARIS APPLICATIONS

4.6. COLARIS FOR SPECIAL APPLICATIONS

TECHNICAL TEXTILES

Our know-how in jettable fluids, waveform generation, mechanical and electrical engineering and our expertise in software enable us also to build digital inkjet printers for applications outside of the typical textile industry.

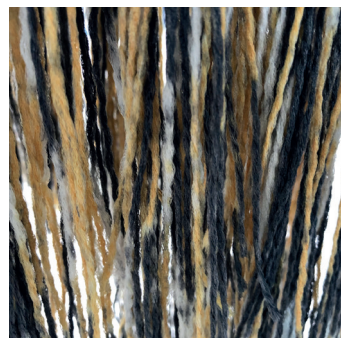
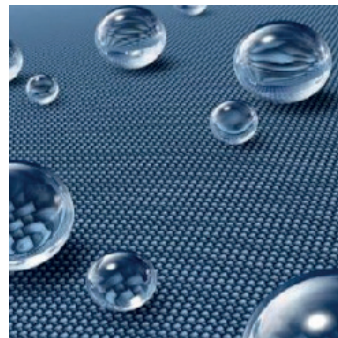


VAT PRINT FOR UNIFORMS & WORK-WEAR

Uniforms and work-wear require highest fastness. **COLARIS** digital VAT printing process guarantees super wash- and light fastness on cotton and regenerated cellulose based fibers.

DIGITAL FUNCTIONALIZATION

„Smart textiles“ created with digital functionalization have a huge potential. For low viscosity products with little solid content - inkjet technology is the way to go. Starfire™ printheads are perfect. High viscosity products with high solid content may be printed with **CHROMOJET** technology.

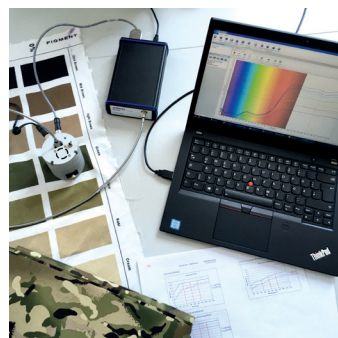


YARN PRINTING & SPACE DYEING

Our target is to print and dye different type of yarns at a speed up to 200 m/min using **COLARIS** or **CHROMOJET** technology.

CAMOUFLAGE PRINTING

Digital camouflage printing has not yet reached the market - but it has enormous potential. Different substrates require different inks and combinations of inks to achieve the required color shade, fastness and selective infrared reflectance.

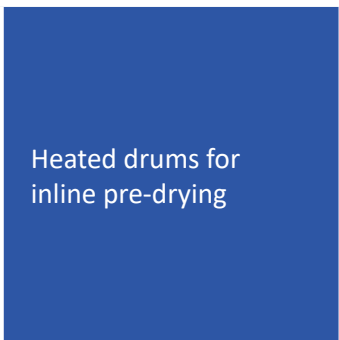


5. COLARIS - NARROW FABRICS

5.1. COLARIS-NF PRINTING



Automatic print head cleaning system



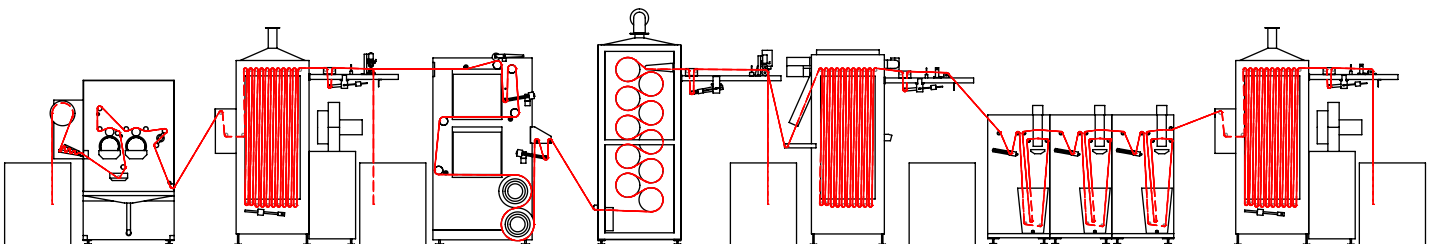
Heated drums for inline pre-drying



TECHNICAL DATA

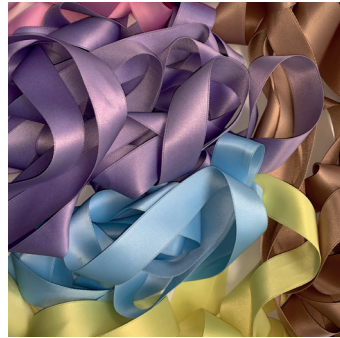
Printing width:	Up to 65 or 260 mm
Printing speed:	Up to 50 m/min (depending on resolution)
Number of colors:	Up to 8 mix of different ink classes and head nozzle sizes possible
Print head nozzle sizes:	XS, S, M
Printing resolution:	400 800 1200 dpi
Print sides:	Single or double-side printing
Ink supply system:	Full circulation & temperature control system

NARROW FABRICS PRINTING LINE



5. COLARIS - NARROW FABRICS

5.2. COLARIS-NF APPLICATION



COLARIS-NF ADVANTAGES

Fully digital application of dyes - any shade, any pattern, any time

- ◆ Efficient short and sample production
- ◆ Change of color and design on the fly
- ◆ Printing of solid colors - digital dyeing
- ◆ Mixed colors or patterns processed simultaneously
- ◆ Unique text or information capability
- ◆ Different colors or patterns on front and back
- ◆ Reduction in process complexity – any pattern/color combination in one process



Lower capital investment

Improved production efficiency

- ◆ Technical hotline
- ◆ Remote maintenance
- ◆ Small and large lots have the same setup and production costs
- ◆ Excellent color fastness
- ◆ Reduced production loss from clean-up or pattern/color changes
- ◆ Easy to operate

Service and support via internet available

Green technology – energy and water savings

- ◆ Reduced waste water accumulation
- ◆ No color mixing required
- ◆ Fewer auxiliary chemicals required
- ◆ Reduction in process steps

Open ink system

Different nozzle sizes



6. CHROMOJET

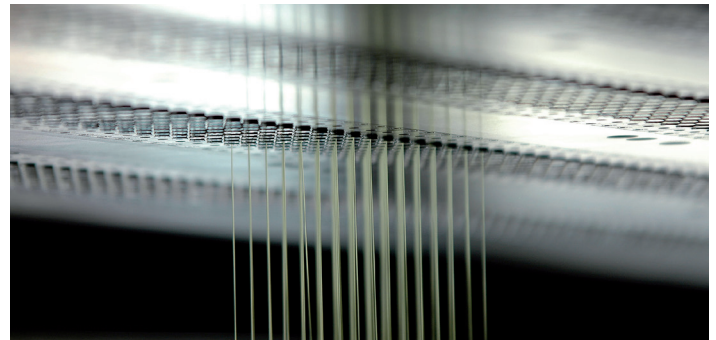
6.1. CHROMOJET - HOW IT WORKS

VALVEJET TECHNOLOGY:

CHROMOJET works with high speed valves. The pre-mixed pressurized spot or process colors are injected with high precision deep into the face of the pile without any machine parts touching the fabric. Deepest color penetration and excellent print definition are the result.

Today the 4th generation (with 50 and 76 dpi) is in operation.

Since its initial introduction more than 300 printers have been installed around the world and about 170 mio sqm of carpet and mats are printed every year with **CHROMOJET**.



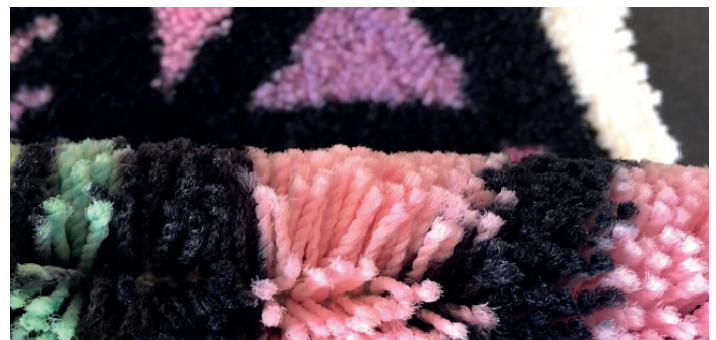
CHROMOJET PRODUCTION PRINTER:

print width:	2200 2700 3200 4200 5200 mm
print resolution:	25 50 75 dpi
number of colors:	2 up to 16
number of jets per color:	32 64 128 256 512 1024
production speed:	100 - 3000 sqm/hour



DYE CLASSES:

- ◆ **Acid and pre-metalized** - to print polyamide (nylon) and wool
- ◆ **Disperse** - to print polyester based carpets
- ◆ **Cationic** - to print modified (cationic) polyester and acrylic fibers
- ◆ **Reactive** - to print polyamide, wool and cotton based carpets and mats



6. CHROMOJET

6.2. CHROMOJET - INSTALLATIONS AND APPLICATIONS



Ranging from 2200 mm up to 5200 mm in production width and from 4 to 16 colors - **CHROMOJET** is available for different application.



APOLO TEXTILE, Mexico



MILLIKEN, Great Britain



NURTEKS, Turkey



MILLENNIUM, USA

7. CARPET COATING

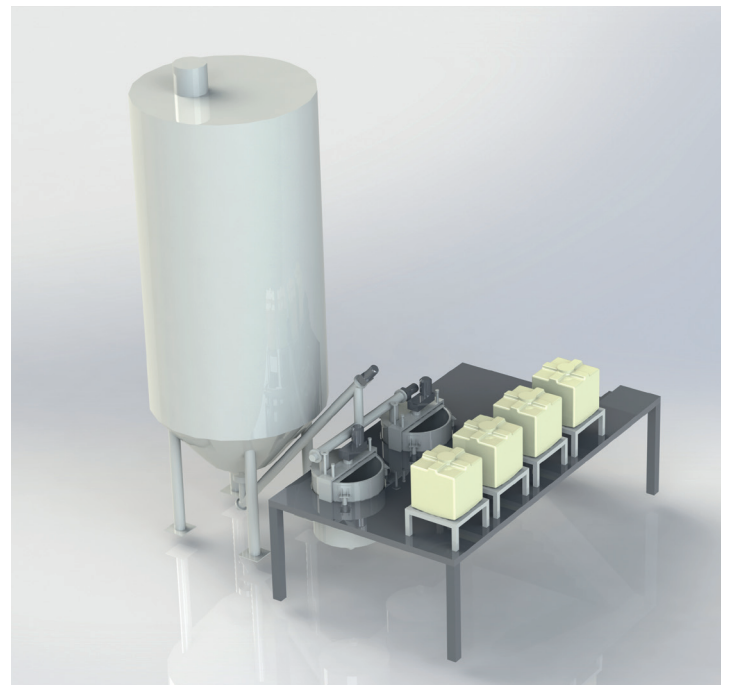
7.1. CARPET BACK COATING



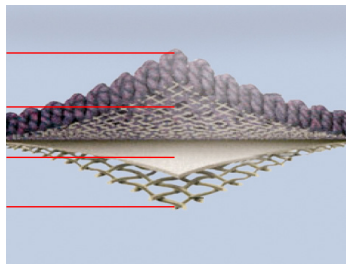
CARPET BACK COATING SYSTEMS FOR SECONDARY AND GEL-FOAM BACKING

We offer carpet backing lines for secondary backing and also for gel foam backings or combined lines: From feeding to foam mixer and applicator, laminator, infrared pre-dryer, embossing station, split-zone dryer to accumulator and roll-up unit.

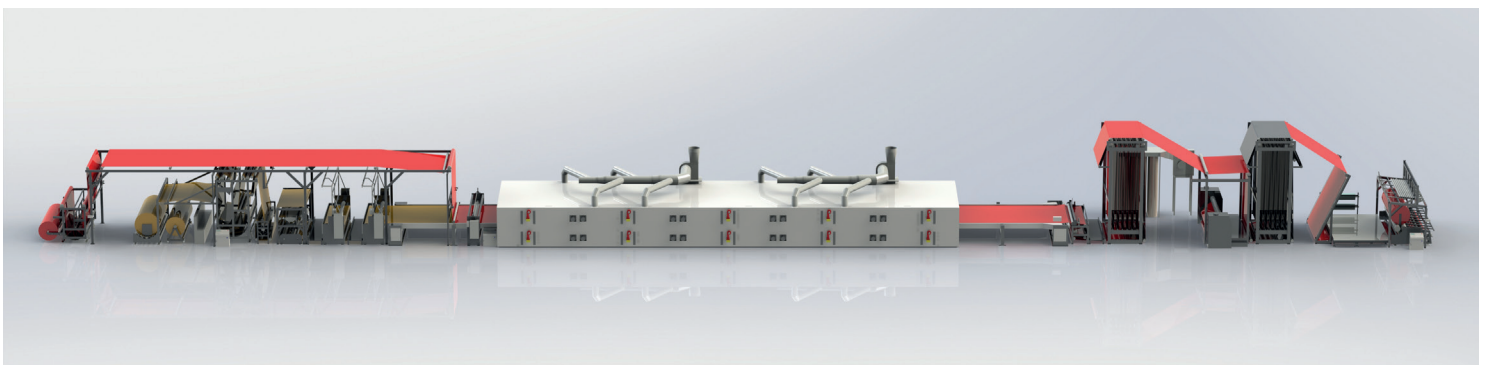
LAYOUT OF A LATEX PREPARATION INSTALLATION:



face yarn
primary backing
SBR latex coat
secondary backing



LAYOUT OF A COMPLETE CARPET BACK COATING LINE:



7. CARPET COATING

7.2. PVC COATING OF CARPET TILES AND MATS

THE SMART WAY OF PVC BACKING

- ◆ Carpet tiles
- ◆ Entrance mats
- ◆ Runners and 2 m/6 ft wide Broadloom Carpet

Process:

- ◆ Tufting of a carpet
- ◆ Pre-coating the tufted carpet with EVA or NBR pre-coat
- ◆ Back coating on a tile back-coating line
- ◆ Tile punching or cutting



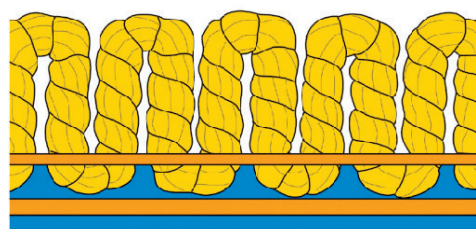
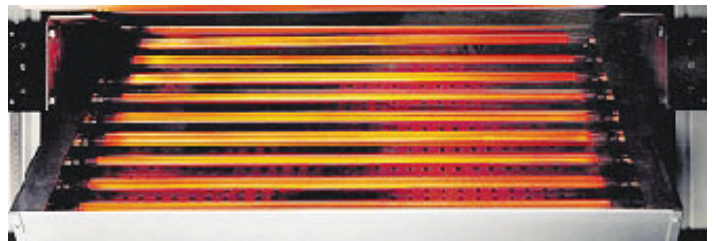
INFRARED CURING - COMPACT, EFFICIENT AND MORE ECONOMIC

4 times more energy-efficient than the classical hot-air oven, resulting in a lower energy bill.

IR waves are heating up the medium and not the air or housing of the oven.

A shorter line is sufficient at a given production capacity. No investment in boiler, thermal oil and piping. No waiting time during start-up and shut-down.

This solution allows unlimited stops and restarts without affecting the quality of jellification.



Primary Backing
Polymer layer No.1
Fibreglass layer No.1
Polymer layer No.2



8. LINE COMPONENTS

8.1. TEXTILE AND CARPET - STEAMING, WASHING, DRYING, ENTRY, EXIT-UNIT

ZIMMER AUSTRIA offers in addition to **COLARIS** and **CHROMOJET** printers a wide range of carpet manufacturing equipment - from 2200 mm up to 5200 mm in width.

Unrolling, accumulators, J-boxes, lint suction, pre-steaming, pre-washing, center guiding units, horizontal and vertical steamers, washing units, foam applicators, foam mixers, stenter-, conveyor and combined dryers, cutting and roll-up units.

All of these lines are controlled by servo drives, PLC's and remote serviced equipment.



Accumulator & pre-washing



Accumulator with electric tension control



Horizontal steamer



Super-heated steamer



Sandwich washer



Sandwich washer



Vacuum pump



Combined carpet stenter and conveyor belt dryer for backed and unbacked carpet



Foam-applicator & steamer



Foam applicator



Roll-up unit



Roll-up unit with foil dispenser

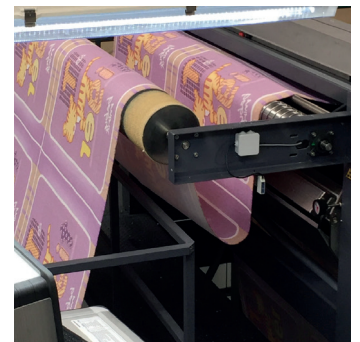
8. LINE COMPONENTS

8.2. OPTIONAL MACHINERY



SUPRAPRESS

to improve penetration on high pile carpets and polyester blankets. Available in widths of 1200 | 2200 | 2700 | 3200 | 4200 | 5200 mm.

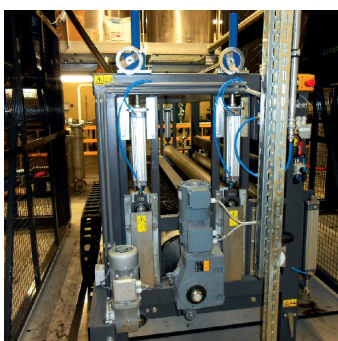


SUPRAFOAM

SUPRAFOAM Generator & Applicator - to impregnate carpet with stain-blockers, stain-release products, softener and other functionalization chemistry.

GUM- AND DYE APPLICATOR

to create light/dark effects in level-cut-loop carpet construction.



KISS-COATER

to apply latex or PVC on to the back-side of carpet constructions.



COLOR KITCHEN

Mixing, preparation and storage tanks for dye and chemicals.

9. LAB EQUIPMENT

9.1. CARPET LAB EQUIPMENT

We offer the complete range of lab equipment necessary for product development, sampling, but also for basic R&D development at ink-, dyestuff-, yarn- and chemical companies.

- ◆ Mixers for dye preparation
- ◆ Viscotester
- ◆ Sample steamer
- ◆ Sample sandwich washer for individual tiles and carpets
- ◆ Sample dryer
- ◆ **COLARIS** sample printer with 1200x1200 mm table size
- ◆ **COLARIS** small production printer with a print width of max. 2200 mm
- ◆ **CHROMOJET800** sample printer with a table size of 1200x1200 mm
- ◆ **CHROMOJET TABLETOP** printer with a table size of 300x300 mm



LAB- STEAMER-WASHER-DRYER

Compact carpet finishing unit (1300 mm wide) which can handle individual samples printed on **COLARIS** or **CHROMOJET**.

The sample is put onto the conveyor belt which runs through the complete line.

Steaming, washing and drying the sample is completed within 20 minutes.

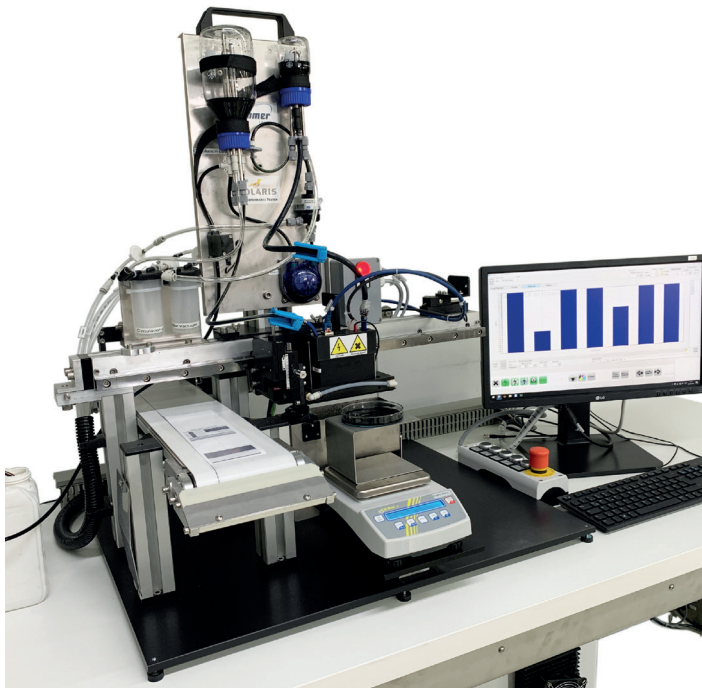
COLARIS SAMPLE PRINTER

- ◆ up to 12 colors with 1 StarFire™ print head
- ◆ table size of 1200x1200 mm (4 ft*4 ft)
- ◆ for lab-, sampling- and product development work.



9. LAB EQUIPMENT

9.2. SPECIAL MACHINERY - COLARIS INK PERFORMANCE TESTER, CHROMOJET TABLETOP



The **COLARIS INK** Performance Tester is designed for development purposes in combination with the **COLARIS INKJET** Technology.

The **COLARIS INK** Performance Tester is the ideal tool for the development or evaluation of inks and other jetting fluids. With the replaceable ink supply unit, you can change between inks quickly.

In addition to ink testing there is also the option to test the performance and function of print-heads.

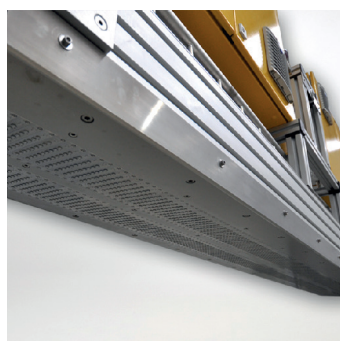
- ◆ INK DEVELOPMENT
- ◆ INK EVALUATION
- ◆ StarFire™ PRINT HEAD PERFORMANCE TEST
- ◆ StarFire™ PRINT HEAD FLOW RATE TEST



Ink Filtration Tester - to check filterability of ink. The decrease of flow rate is measured over time to see how an ink performs during filtration.



CHROMOJET TABLETOP PRINTER is perfect to develop new applications, processes and recipes in the field of **CHROMOJET** pile product printing and digital functionalization using valve jet technology.



OEM products and developments based on **CHROMOJET** valve or **COLARIS** inkjet technology.

A SELECTION OF OUR CURRENT WORLDWIDE CUSTOMERS:



INNOVATION | QUALITY | SERVICE

ZIMMER MASCHINENBAU GMBH
DIGITAL PRINTING SYSTEMS

Eibergstrasse 2-8
6330 Kufstein | AUSTRIA
+43 (5372) 64893-0
info@zimmer-austria.com
www.zimmer-austria.com



J. ZIMMER Maschinenbau GmbH, Kufstein reserves the right of technical and design modification of the equipment described within this brochure at any time without prior notice. This leaflet is for informative purposes only.